



深圳路盛源科技有限公司

SHENZHEN ROADSUNNY TECHNOLOGY CO., LTD.

客户承认书

SPECIFICATION FOR APPROVAL

CUSTOMER/客户: 日本海渡电子有限公司

FILE NO./认证号: \_\_\_\_\_

PART NO./物料号: 0901000

MODEL NO./产品型号: RS-090100001

Product name/产品名称: AC-DC ADAPTER (9V1.0A) BLACK

PRODUCT NO./产品编号: \_\_\_\_\_

MAINFRAME MODEL/主机型号: \_\_\_\_\_

MARK 修改标记	REVISED CONTENT 修改内容	APPROVED & DATE 认可日期
REV:01	首次发行	2022/10/21

AUTHORIZED SIGNATURE & COMPANY CHOP/客户认可签回	

DATE/日期	2022/10/21	EDITION/版本	01	PAGE/页码	1 OF 10
DESIGN/拟制		CHECK/审核		APPROVAL/批准	



F 3, BLDG A, Fengze Building, HangChengRoad, GuShu, XiXiang, Bao' an, ShenZhen  
 深圳市宝安区西乡街道固戍航城大道航空路丰泽楼A座3楼

Tel:0755-27449338 Fax:0755-27449328 E-mail:web@szshengji.com Website:http://www.shengjipower.com



# 目录/Contents

变更履历表.....	2
1. 安规标准SAFETY STANDARD:.....	4
2. 绝缘介电强度(耐压) (S)/DIELECTRIC WITHSTANDING STRENGTH(HI-POT).....	4
3. 输入特性INPUT FEATURE.....	4
3.1 额定输入电压范围RATED INPUT VOLTAGE.....	4
3.2 额定输入频率RATED INPUT FREQUENCY.....	4
3.3 最大输入电流INPUT CURRENT (MAX).....	4
3.4 最大浪涌电流INRUSH CURRENT.....	4
3.5. 平均效率(Average Efficiency) .....	4
4. 输出特性OUTPUT FEATURE.....	4
5. LED指示LED indicator.....	5
6. 保护Protection.....	5
6.1 输出短路保护SHORT-CIRCUIT PROTECTION.....	5
6.2 过电流保护Over current protection.....	5
6.3 输入保护Input protection device.....	5
7. 环境条件ENVIRONMENTAL CONDITIIONS.....	5
7.1 操作条件OPERATING.....	5
7.1.1 操作温度Operating Temperature.....	5
7.1.2 相对湿度Relative Humidity.....	5
7.1.3 振动Vibration.....	5
7.1.4 冷却Cooling.....	5
7.2 非操作条件NON-OPERATING.....	6
7.2.1. 存储环境温度Storage Temperature.....	6
7.2.2. 振动和冲击Vibration and Shock.....	6
8. 电磁兼容性标准EMC STANDARDS.....	6
9. 可靠性及品质控制RELIABILITY AND QUALITY CONTROL.....	6
9.1 烘烤1BURN-IN.....	6
9.2 元件温度要求(S)COMPONENT DERATING.....	6
9.3 平均无故障时间MTBF.....	6
10. 绝缘阻抗INSULATION RESISTANCE.....	6
11. 漏电流LEAKAGE CURRENT.....	6
12. 主要测量设备MAJOR MEASURE EQUIPMENT.....	6
13. 外观图EXTERNAL VIEW.....	7
14. 输出线材OUTPUT WIRE.....	8
15. 铭牌NAME PLATE.....	9
16. 包装CASING.....	10

# ELECTRICAL PERFORMANCE/电气性能

## 1. SAFETY STANDARD/安规标准:

The power supply shall be certified by the following international regulatory standards  
电源应符合下列的国际标准

	Country	Certified Status	Standard/标准
PSE	Japan(日本)	MEET	电安法

## 2. DIELECTRIC WITHSTANDING STRENGTH(HI-POT)/绝缘介电强度(耐压)(S):

Primary to Secondary AC3000V, 5mA 1 minute for type test, 3 second for production.

一次侧对二次侧: AC3000V, 5mA标准测试1分钟, 量产测试3秒钟.

## 3. INPUT FEATURE/输入特性:

3.1 RATED INPUT VOLTAGE: 100Vac to 240Vac. 额定输入电压范围从100Vac到240Vac.

INPUT VOLTAGE RANGE: 90Vac to 264Vac. 输入电压范围从90Vac到264Vac.

3.2 RATED INPUT FREQUENCY: 50/60Hz. 额定输入频率50/60Hz.

INPUT FREQUENCY RANGE: 47Hz to 63Hz. 输入频率范围从47Hz到63Hz.

3.3 INPUT CURRENT: 0.4A max. at 100-240Vac. 最大输入电流0.4A(输入条件100-240Vac).

3.4 INRUSH CURRENT: 40A max. at 100-240Vac input for a cold start at 25°C.

在冷开机条件下, 最大浪涌电流不超过40A(输入条件100-240Vac).

3.5 EFFICIENCY: More than 72% at 115/230Vac input and output full load.

效率高于72%(输入115/230Vac和输出满载条件).

## 4. OUTPUT FEATURE/输出特性:

RATED OUTPUT/额定输出(I)	SPEC. LIMIT/规格限定		REMARK/备注
	Min. value	Max. value	
9VDC			
Output regulation/输出电压规格(I)	8.45VDC	9.55VDC	按承认样品为准
Output load/输出负载规格	0A	1.0A	
Ripple and Noise/输出纹波及噪声(I)		120mVp-p	AT input Voltage:220Vac
			20MHz Bandwidth 10uF
			Ele. Cap.0.1uF Cer. Cap.
Hold up time/关机维持时间	8mS	-	Input voltage: 100Vac
	16mS	-	Input voltage: 220Vac
Transient response/输出瞬态响应	-	800mV	Output load change from 20% to 80% of MAX. load(1.0A)
Over - shoot.		10 %	Less than 5 % of Normal voltage value.
Rise time.		20mS	The output voltage should rise from 0 volts settle within regulation in less than 20 msec From apply of AC input voltage.
Turn-on time		4S	Dc output turn-on delay time shall less than 4 sec.

# ELECTRICAL PERFORMANCE/电气性能

## 5. LED indicator/LED指示

NO LED indicator/无LED指示

## 6. Protection./保护

### 6.1 SHORT-CIRCUIT PROTECTION/输出短路保护:

The power supply shall be protection (hiccupped & power reduced) and no damage shall occur when any output operating in a short circuit condition under any line condition for an indefinite period of time. The power supply shall be self-recovery when the fault condition is removed.

在任何时候,任何输入条件下,当输出操作在短路情况下,电源供应器将进入保护(打嗝或功率下降)模式,当短路故障消失后,电源要能自动恢复正常.

### 6.2 Over current protection/过电流保护

An over current from the output to return line will not damage the power supply.

来自输出的过电流不至于损坏电源供应器

### 6.3 Input protection device/输入保护

An adequate internal fuse on the AC input line is provided

一个适当的保险丝为输入提供保护.

## 7. ENVIRONMENTAL CONDITIONS/环境条件:

### 7.1 OPERATING/操作条件:

The power supply shall be capable of operating continuously in any mode without performance deterioration in the following environmental conditions.

在下列环境条件下,电源供应器要能够连续操作在各种模式,且不能造成性能的退化.

7.1.1 Operating Temperature: 0°C ~ 40°C with the set of customer/操作温度: 0°C ~ 40°C

配客户的使用设备

7.1.2 Relative Humidity: 20% ~ 80%/相对湿度: 20% ~ 80%

7.1.3 Vibration: 1.0mm, 10-25Hz, 15 minutes per cycle for each axis (x, y, z)

振动: 分别在X, Y, Z方向, 1.0mm, 10-25Hz, 15分钟

7.1.4 Cooling: The power supply will operate with convection cooling, Blocking of vents must not cause damage to the power supply.

电源供应器将操作在对流冷却的环境下,即使将通风口阻塞电源也不允许有任何损伤发生.

# ELECTRICAL PERFORMANCE/电气性能

## 7.2 NON-OPERATING/非操作条件:

The power supply shall be capable of withstanding the following environmental conditions extended periods of time, ( put it into normal ambient condition treated for 30 min, The test result must be satisfied with item 2 & 4 )

电源供应器要能长期的经受下列的环境条件。(在常温常湿中放置30分钟,产品仍须满足上述第2项和第4项的要求.)

7.2.1 Storage Temperature: -20°C ~ 70°C/存储环境温度: -20°C ~ 70°C

Relative Humidity: 10% ~ 90%/相对湿度: 10% ~ 90%

7.2.2 Vibration and Shock/振动和冲击:

The power supply shall be designed to withstand normal transportation vibration per GB/T4857.10, as it is mounted in the chassis assemble and packed for shipping.

电源供应器装配及出货的包装设计,均要能承受正常运输的振动,并符合GB/T4857.10.

## 8. EMC STANDARDS/电磁兼容性标准:

Meets the Limits of/测试符合

Fcc class B

EN55032 class B

GB9254-2008, GB17625.1-2012, GB13837-2012

## 9. RELIABILITY AND QUALITY CONTROL/可靠性及品质控制:

9.1 BURN-IN/烘烤:

The power supply shall undergo a minimum of 4 hours Burn-In test under full load at 35 ~ 40°C. /电源应在35 ~ 40°C和满载条件下烘烤4小时.

9.2 COMPONENT DERATING/元件温度要求(S):

Semiconductor junction temperatures shall not exceed the manufacturer's maximum thermal rating. /半导体结温不允许超过其制造商要求的最大温度值.

9.3 MTBF/平均无故障时间:

50,000 Hour at 25 deg C. /50,000小时在25 deg C.

## 10. INSULATION RESISTANCE/绝缘阻抗:

INPUT TO OUTPUT: 7MΩ min. (500VDC) /输入对输出7MΩ 最小 (500VDC)

## 11. LEAKAGE CURRENT/漏电流:

The leakage current shall be less than 0.25mA for Class II when power supply is operated maximum input voltage and maximum load.

当电源供应器操作在最大输入和最大负载的情况下,其漏电流应小于 0.25mA,满足Class II等级.

## 12. MAJOR MEASURE EQUIPMENT/主要测量设备:

A. AC SOURCE/交流输入电源

B. POWER METER/电源功率计

C. ELECTRONIC LOAD/电子负载

D. OSCILLOSCOPE/存储示波器

E. DIGITAL MULTIMETER/数字式万用表

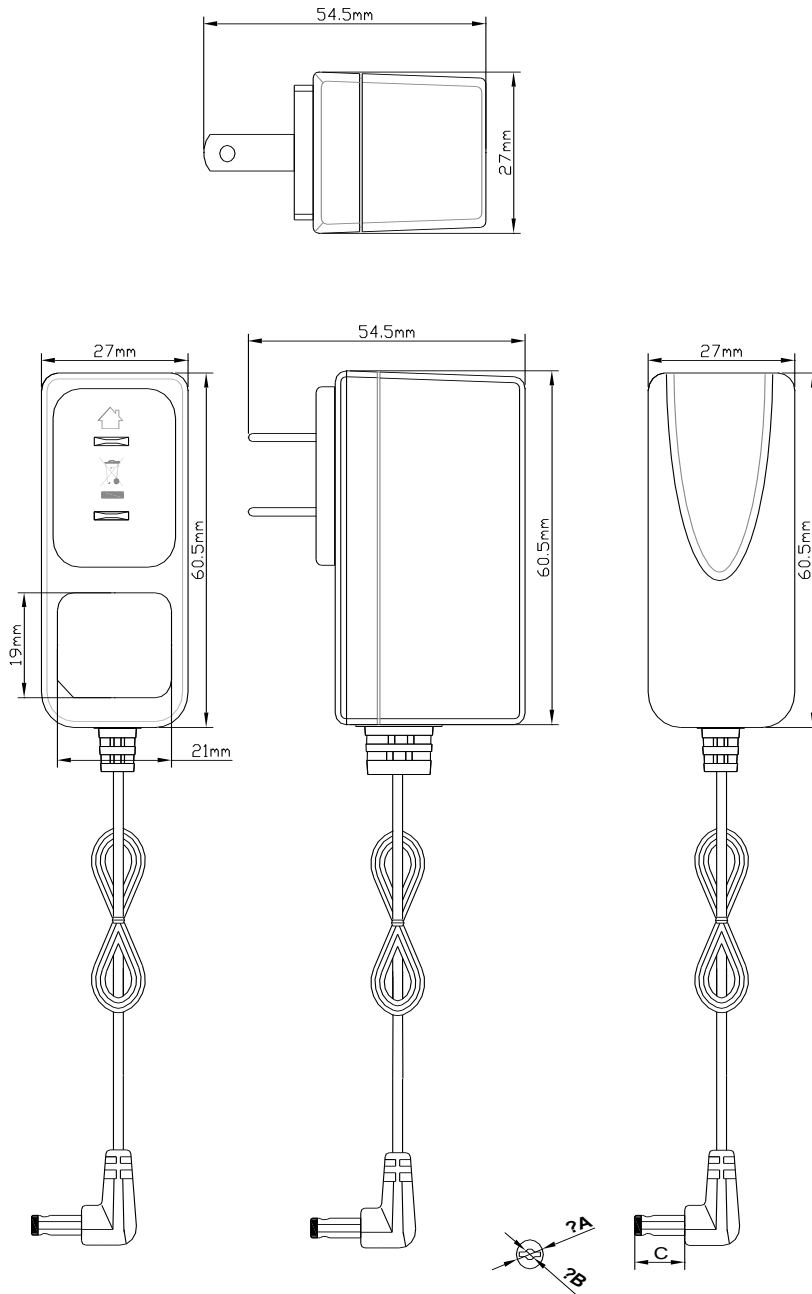
G HI-POT TESTER/耐压测试仪

H INSULATION RESISTANCE TESTER/绝缘电阻表

# EXTERNAL VIEW/外观图

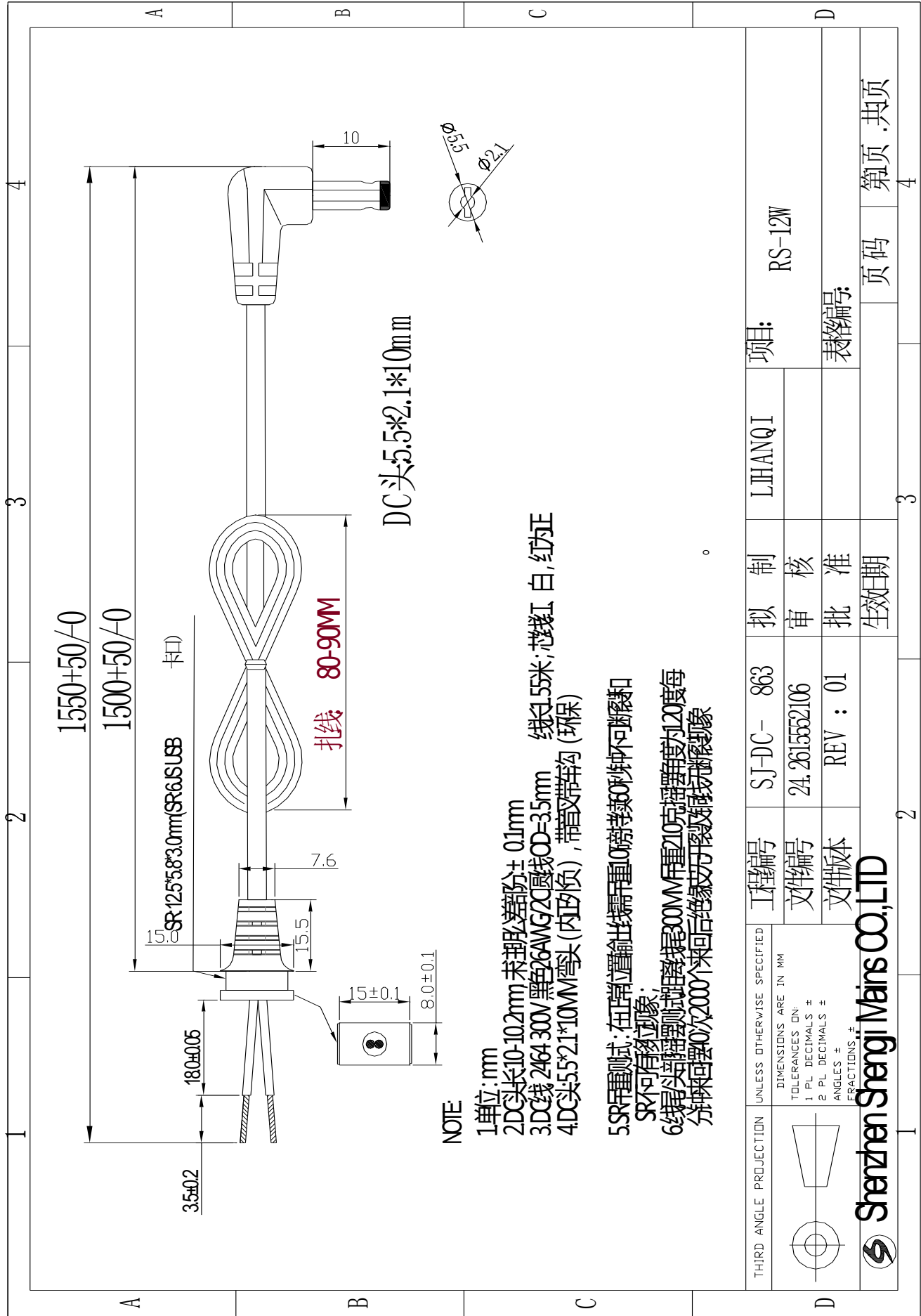
MECHANICAL DIMENSION (UNIT IN mm)

外形尺寸(单位:mm)



	$\Phi A$	$\Phi B$	C	D
DIMENSION/尺寸	5.5	2.1	10	1500
TOLERANCE/公差	$\pm 0.05$	$\pm 0.05$	$\pm 0.5$	+20 / -20
NOTES	Cable length:1.5m, 2464 26AWG/2C 5.5*2.1*10MM 180Degree with Fork/Kink Type and Without Filter			

OUTPUT WIRE/输出线材

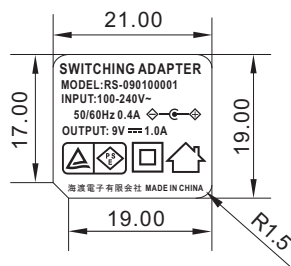


THIRD ANGLE PROJECTION	UNLESS OTHERWISE SPECIFIED	工程编号	SJ-DC- 863	拟制	LJHANQI	项目:	RS-12W
	DIMENSIONS ARE IN MM	文件编号	24.2615552106	审核		表格编号:	
	TOLERANCES ON:	文件版本	REV : 01	批准		生效日期	
	1 PL DECIMALS ±	Shenzhen Shengji Mains CO.,LTD		页码	第 3 页	共 4 页	
	2 PL DECIMALS ±						
	ANGLES ±						
	FRACTIONS ±						



# NAME PLATE/铭牌

NAME PLATE/铭牌:



UNIT/单位: mm

TOLERANCE/公差: +0/-0.2

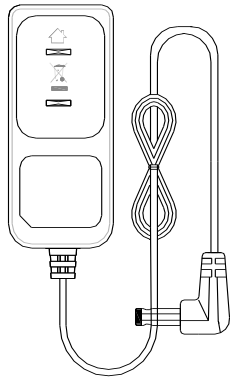
鐫雕产品

\* PLEASE ADVISE IF ANY COMMENT ON NAME PLATE INFORMATION. OTHERWISE, THIS INFORMATION IS REGARDED AS CUSTOMER APPROVAL AND APPLY IN PRODUCTION.

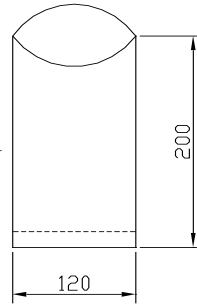
铭牌资料供客户样品认可使用, 如有疑问, 请于样品认可前提出, 否则, 资料将视作客户认可并应用于生产上.

# CASING/包装

Product

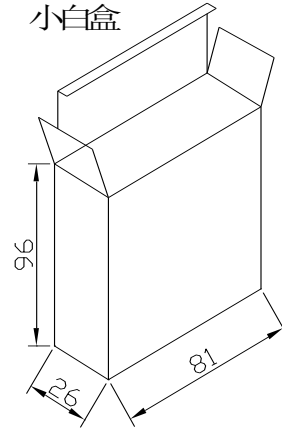


PE filmbags

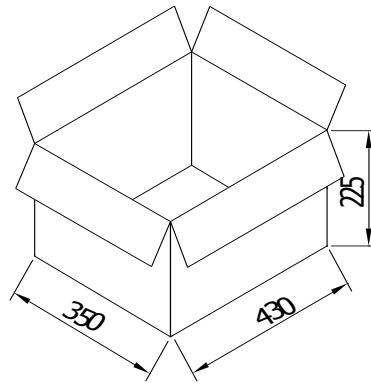


The little White Box

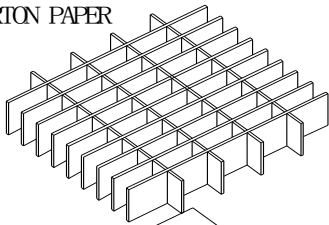
小白盒



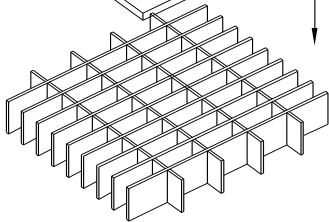
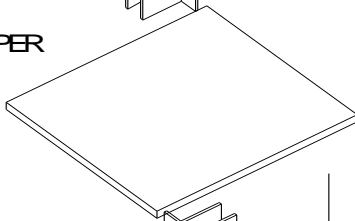
外箱Master carton



刀卡/CARTON PAPER



平板/PLATE PAPER



The tolerance of internal dimensions of the carton is +7/-0

CARTON MATERIAL: K-K (5mm)

CARTON SIZE: 430\*350\*225mm

外箱尺寸: 430\*350\*225mm

Partition Board: 420\*340\*3 (1PCS)

Cross-Connecting Board: 420\*100\*3 (8PCS) A=A

Cross-Connecting Board: 330\*100\*3 (18PCS) A=A

QTY: 100PCS (50PCS\*2)

数量: 100PCS (50PCS\*2)