



深圳盛基电源有限公司  
Shenzhen Shengji Mains CO., LTD

SPECIFICATION FOR APPROVAL

客户承认书

CUSTOMER/客户: 日本海渡电子有限公司

CUSTOMER PART NO./客户料号: \_\_\_\_\_

PART NO./物料号: 2400400

MODEL NO./产品型号: SJ-24040001

Product name/产品名称: AC-DC ADAPTER (24V4.0A)

PRODUCT NO./产品编号: \_\_\_\_\_

MAINFRAME MODEL/主机型号: \_\_\_\_\_

MARK 修改标记	REVISED CONTENT 修改内容	APPROVED & DATE 认可日期
REV: 01	首次发行	2025/7/2

AUTHORIZED SIGNATURE & COMPANY CHOP/客户认可签回	

DATE/日期	2025/7/2	EDITION/版本	01	PAGE/页码	1 OF 10
DESIGN/拟制		CHECK/审核		APPROVAL/批准	

Shenzhen Shengji Mains CO., LTD\深圳盛基电源有限公司  
F 3, BLDG A, Fengze Building, HangChengRoad, GuShu, XiXiang, Bao' an, ShenZhen  
深圳市宝安区西乡街道固戍航城大道航空路丰泽楼A座3楼

Tel: 0755-27449338 Fax: 0755-27449328 E-mail: web@szshengji.com Website: <https://www.shengjipower.com>





# 目录/Contents

变更履历表.....	2
1. 安规标准SAFETY STANDARD:.....	4
2. 绝缘介电强度(耐压)(S)/DIELECTRIC WITHSTANDING STRENGTH(HI-POT).....	4
3. 输入特性INPUT FEATURE.....	4
3.1 额定输入电压范围RATED INPUT VOLTAGE.....	4
3.2 额定输入频率RATED INPUT FREQUENCY.....	4
3.3 最大输入电流INPUT CURRENT (MAX).....	4
3.4 最大浪涌电流INRUSH CURRENT.....	4
3.5. 效率EFFICIENCY.....	4
4. 输出特性OUTPUT FEATURE.....	5
5. LED指示LED indicator.....	5
6. 保护Protection.....	5
6.1 输出短路保护SHORT-CIRCUIT PROTECTION.....	5
6.2 过电流保护Over current protection.....	5
6.3 输入保护Input protection device.....	5
7. 环境条件ENVIRONMENTAL CONDITIIONS.....	5
7.1 操作条件OPERATING.....	5
7.1.1 操作温度Operating Temperature.....	5
7.1.2 相对湿度Relative Humidity.....	5
7.1.3 振动Vibration.....	5
7.1.4 冷却Cooling.....	5
7.2 非操作条件NON-OPERATING.....	6
7.2.1. 存储环境温度Storage Temperature.....	6
7.2.2. 振动和冲击Vibration and Shock.....	6
8. 电磁兼容性标准EMC STANDARDS.....	6
9. 海拔标准Elevation of the standard.....	6
10. 可靠性及品质控制RELIABILITY AND QUALITY CONTROL.....	6
10.1 烘烤1BURN-IN.....	6
10.2 元件温度要求(S)COMPONENT DERATING.....	6
10.3 平均无故障时间MTBF.....	6
11. 绝缘阻抗INSULATION RESISTANCE.....	6
12. 漏电流LEAKAGE CURRENT.....	6
13. 主要测量设备MAJOR MEASURE EQUIPMENT.....	6
14. 外观图EXTERNAL VIEW.....	7
15. 输出线材OUTPUT WIRE.....	8
16. 铭牌NAME PLATE.....	9
17. 包装CASING.....	10

# ELECTRICAL PERFORMANCE/电气性能

## 1. SAFETY STANDARD/安规标准:

The power supply shall be certified by the following international regulatory standards

电源应符合下列的国际标准

	Country	Certified Status	Standard/标准
CE	(Europe) 欧洲	MEET	EN62368-1
UKCA	(United Kingdom) 英国	MEET	BS EN55032
CUL	(America/Canada) 美国/加拿大	MEET	UL 60950-1/CSA C22.2 No. 60950-1-03
CCC	CHINA(中国)	MEET	GB 17625.1-2012;GB 4943.1-2022;GB/T 9254.1-2021
PSE	Japan(日本)	MEET	J62368-1(2023), J55032(H29)
SAA	(Australia) 澳洲	MEET	AS/NES60950.1:2011
FCC	美国/USA	MEET	Class B

## 2. DIELECTRIC WITHSTANDING STRENGTH(HI-POT)/绝缘介电强度(耐压)(S):

Primary to Secondary AC2000V, 5mA\_1 minute for type test, 3 second for production.

一次侧对二次侧: AC2000V, 5mA标准测试1分钟, 量产测试3秒钟.

## 3. INPUT FEATURE/输入特性:

3.1 RATED INPUT VOLTAGE: 100Vac to 240Vac. 额定输入电压范围从100Vac到240Vac.

INPUT VOLTAGE RANGE: 90Vac to 264Vac. 输入电压范围从90Vac到264Vac.

3.2 RATED INPUT FREQUENCY: 50/60Hz. 额定输入频率50/60Hz.

INPUT FREQUENCY RANGE: 47Hz to 63Hz. 输入频率范围从47Hz到63Hz.

3.3 INPUT CURRENT: 1.5A max. at 100-240Vac. 最大输入电流1.5A(输入条件100-240Vac).

3.4 INRUSH CURRENT: 40A max. at 100-240Vac input for a cold start at 25°C.

在冷开机条件下, 最大浪涌电流不超过40A(输入条件100-240Vac).

3.5 EFFICIENCY: More than 78% at 115/230Vac input and output full load.

效率高于78%(输入115/230Vac和输出满载条件).

## 4. OUTPUT FEATURE/输出特性:

RATED OUTPUT/额定输出(I)	SPEC. LIMIT/规格限定		REMARK/备注
	Min. value	Max. value	
<u>24VDC</u>			
Output regulation/输出电压规格(I)	<u>22.80VDC</u>	<u>25.20VDC</u>	电压5%
Output load/输出负载规格	<u>0A</u>	<u>4.0A</u>	
Ripple and Noise/输出纹波及噪声(I)		<u>240mVp-p</u>	AT input Voltage:220Vac
			20MHz Bandwidth 10uF
			Ele. Cap.0.1uF Cer. Cap.
Hold up time/关机维持时间	<u>8mS</u>	-	Input voltage: 100Vac
	<u>16mS</u>	-	Input voltage: 220Vac
Transient response/输出瞬态响应	-	<u>800mV</u>	Output load change from 20% to 80% of MAX. load(4.0A)
Over - shoot.		<u>10 %</u>	Less than 5 % of Normal voltage value.
Rise time.		<u>20mS</u>	The output voltage should rise from 0 volts settle within regulation in less than 20 msec From apply of AC input voltage.
Turn-on time		<u>4S</u>	Dc output turn-on delay time shall less than 4 sec.

## ELECTRICAL PERFORMANCE/电气性能

### 5. LED indicator/LED指示

Nominal operation: Green Green LED indicator. /正常工作: 绿色LED指示  
current protection: Blink. /过流保护: 灯闪

### 6. Protection./保护

#### 6.1 SHORT-CIRCUIT PROTECTION/输出短路保护:

The power supply shall be protection (hiccupped & power reduced) and no damage shall occur when any output operating in a short circuit condition under any line condition for an indefinite period of time. The power supply shall be self-recovery when the fault condition is removed.

在任何时候,任何输入条件下,当输出操作在短路情况下,电源供应器将进入保护(打嗝或功率下降)模式,当短路故障消失后,电源要能自动恢复正常.

#### 6.2 Over current protection/过电流保护

An over current from the output to return line will not damage the power supply.

The minimum overcurrent protection point is 5.6A

来自输出的过电流不至于损坏电源供应器,过流保护点为5.6A最小。

#### 6.3 Input protection device/输入保护

An adequate internal fuse on the AC input line is provided

一个适当的保险丝为输入提供保护.

### 7. ENVIRONMENTAL CONDITIIONS/环境条件:

#### 7.1 OPERATING/操作条件:

The power supply shall be capable of operating continuously in any mode without performance deterioration in the following environmental conditions.

在下列环境条件下,电源供应器要能够连续操作在各种模式,且不能造成性能的退化.

7.1.1 Operating Temperature: 0°C ~ 25°C with the set of customer/操作温度: 0°C ~ 25°C  
配客户的使用设备

7.1.2 Relative Humidity: 20% ~ 80%/相对湿度: 20% ~ 80%

7.1.3 Vibration: 1.0mm, 10-25Hz, 15 minutes per cycle for each axis(x, y, z)  
振动: 分别在X, Y, Z方向, 1.0mm, 10-25Hz, 15分钟

7.1.4 Cooling: The power supply will operate with convection cooling, Blocking of vents must not cause damage to the power supply.

电源供应器将操作在对流冷却的环境下,即使将通风口阻塞电源也不允许有任何损伤发生.

# ELECTRICAL PERFORMANCE/电气性能

## 7.2 NON-OPERATING/非操作条件:

The power supply shall be capable of withstanding the following environmental conditions extended periods of time, ( put it into normal ambient condition treated for 30 min, The test result must be satisfied with item 2 & 4 )

电源供应器要能长期的经受下列的环境条件。(在常温常湿中放置30分钟,产品仍须满足上述第2项和第4项的要求。)

7.2.1 Storage Temperature: -20°C ~ 70°C/存储环境温度: -20°C ~ 70°C

Relative Humidity: 10% ~ 90%/相对湿度: 10% ~ 90%

## 7.2.2 Vibration and Shock/振动和冲击:

The power supply shall be designed to withstand normal transportation vibration per GB/T4857.10, as it is mounted in the chassis assemble and packed for shipping.

电源供应器装配及出货的包装设计,均要能承受正常运输的振动,并符合GB/T4857.10.

## 8. EMC STANDARDS/电磁兼容性标准:

Meets the Limits of/测试符合

Fcc class B

EN55032 class B

GB 17625.1-2012; GB 4943.1-2022; GB/T 9254.1-2021 ; UL 60950-1/CSA C22.2 No. 60950-1-03; EN62368-1

EN 55032: 2015; EN 55024: 2010+A1: 2015; EN 61000-3-2: 2014; EN 61000-3-3: 2013; J62368-1 (2023), J55032 (H29)

## 9. Elevation of the standard/海拔标准:

Only for altitudes up to 2000 m and below and in non-tropical climates.

仅限于海拔高度2000米及以下和非热带气候条件下使用。

## 10. RELIABILITY AND QUALITY CONTROL/可靠性及品质控制:

### 10.1 BURN-IN/烘烤:

operating at the invariable temperature and invariable humidity (恒温恒湿工作)

The product should operate at 25°C ± 2°C, 90~95%RH, test of operating for 48 hours (full load)  
(该产品恒温恒湿工作环境为25°C ± 2°C, 90~95%RH, 满载工作状态下进行试验48小时)

### 10.2 COMPONENT DERATING/元件温度要求(S):

Semiconductor junction temperatures shall not exceed the manufacturer's maximum thermal rating. /半导体结温不允许超过其制造商要求的最大温度值。

### 10.3 MTBF/平均无故障时间:

50,000 Hour at 25 deg C. /50,000小时在25 deg C.

## 11. INSULATION RESISTANCE/绝缘阻抗:

INPUT TO OUTPUT: 7MΩ min. (500VDC) /输入对输出7MΩ 最小 (500VDC)

## 12. LEAKAGE CURRENT/漏电流:

The leakage current shall be less than 0.25mA for Class II when power supply is operated maximum input voltage and maximum load.

当电源供应器操作在最大输入和最大负载的情况下,其漏电流应小于 0.25mA, 满足Class II等级。

## 13. MAJOR MEASURE EQUIPMENT/主要测量设备:

A. AC SOURCE/交流输入电源

B. POWER METER/电源功率计

C. ELECTRONIC LOAD/电子负载

D. OSCILLOSCOPE/存储示波器

E. DIGITAL MULTIMETER/数字式万用表

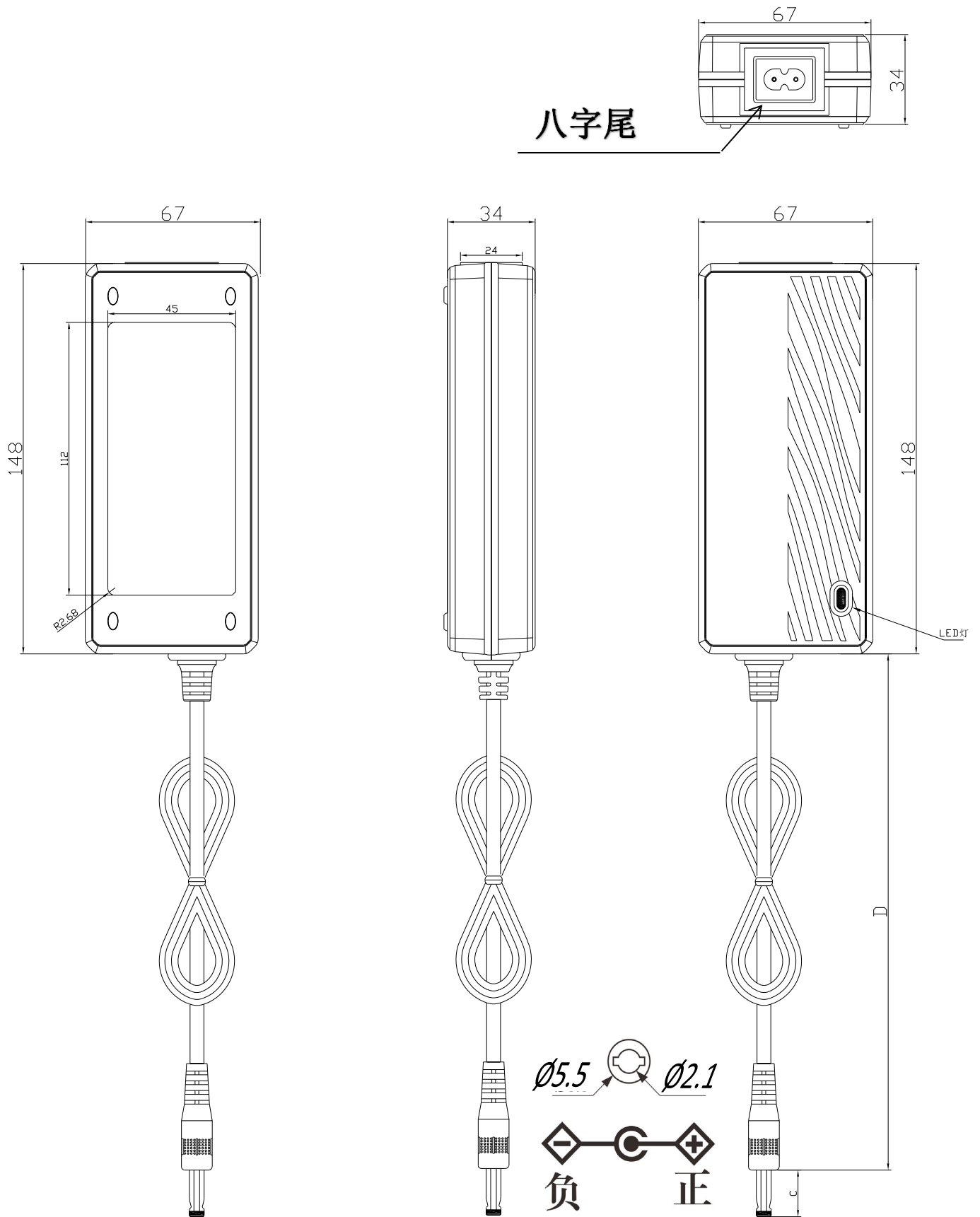
G HI-POT TESTER/耐压测试仪

H INSULATION RESISTANCE TESTER/绝缘电阻表

# EXTERNAL VIEW/外观图

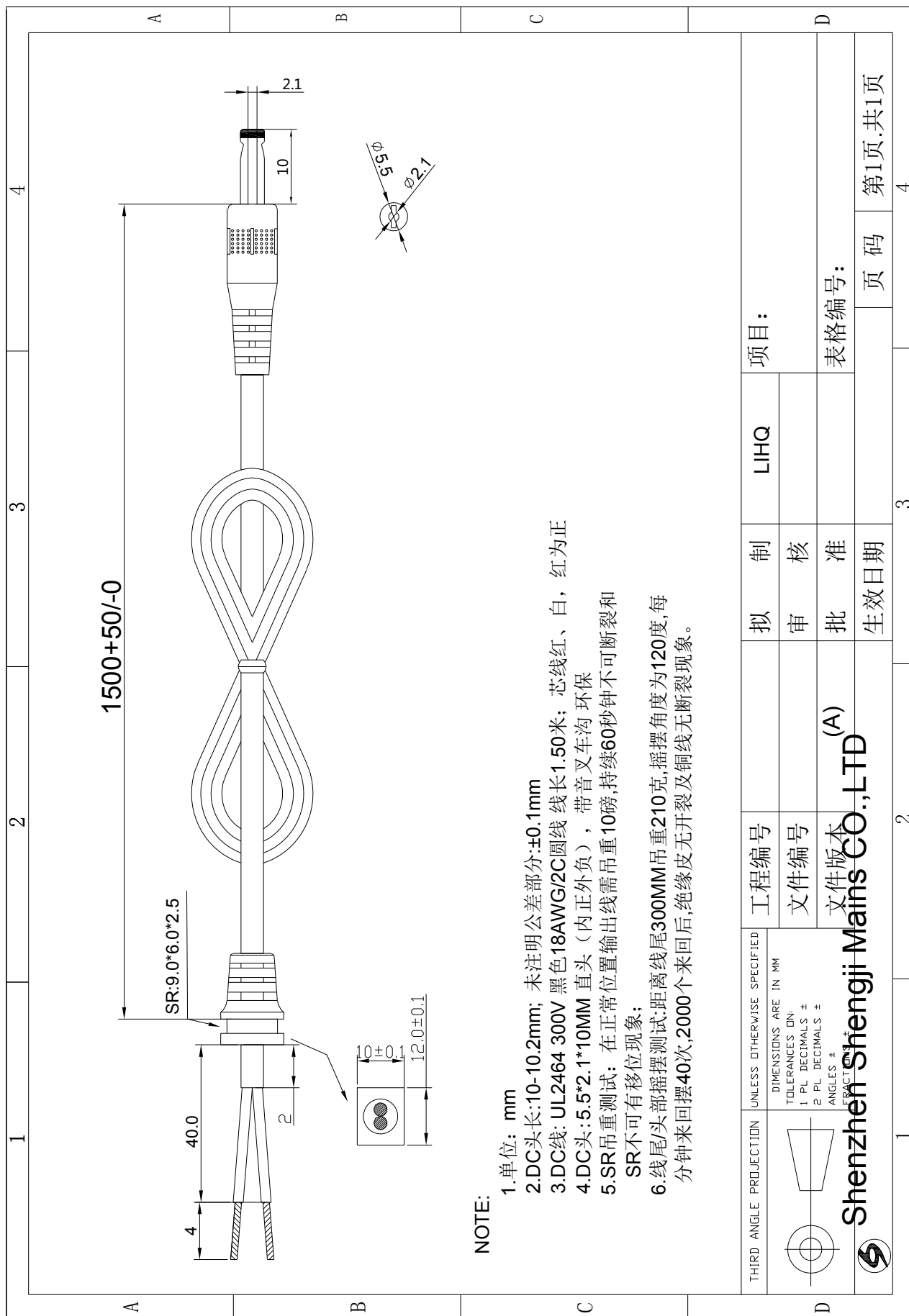
## 14. MECHANICAL DIMENSION (UNIT IN mm)

外形尺寸(单位: mm): L: 148\*W: 67\*H: 34mm



# OUTPUT WIRE/输出线材

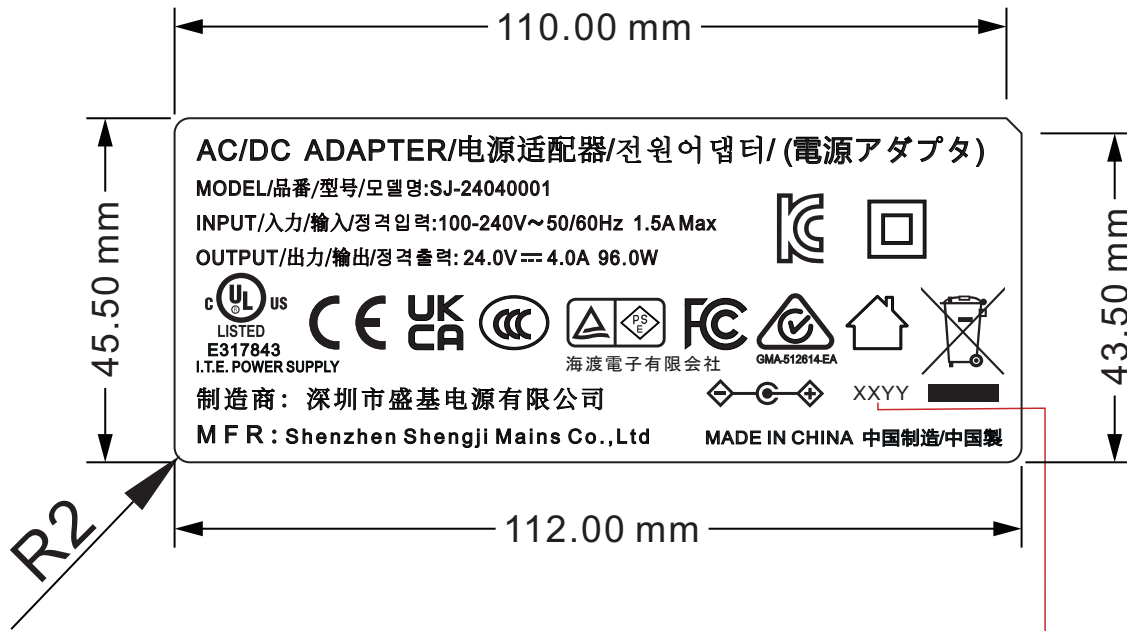
## 15. OUTPUT WIRE/输出线材



THIRD ANGLE PROJECTION	UNLESS OTHERWISE SPECIFIED	工程编号	拟制	LIHQ	项目:
	DIMENSIONS ARE IN MM TOLERANCES ON: 1 PL DECIMALS ± 2 PL DECIMALS ± ANGLES ± FRACTIONS ±	文件编号	审核		
		文件版本	批准		表格编号:
		<b>Shenzhen Shengji Mains Co., LTD (A)</b>	生效日期	页码	第1页,共1页

# NAME PLATE/铭牌

16. NAME PLATE/铭牌:



比例/ Scale: 1:1

XX表示年份

Yy表示周期

例如: 2024年3月24日则是2413  
(镭雕机系统自动变更周期)

UNIT/单位:mm

TOLERANCE/公差: +0/-0.2

The laser carving/激光镭雕

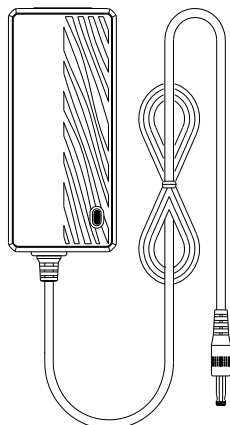
\* PLEASE ADVISE IF ANY COMMENT ON NAME PLATE INFORMATION. OTHERWISE, THIS INFORMATION IS REGARDED AS CUSTOMER APPROVAL AND APPLY IN PRODUCTION.

铭牌资料供客户样品认可使用, 如有疑问, 请于样品认可前提出, 否则, 资料将视作客户认可并应用于生产上.

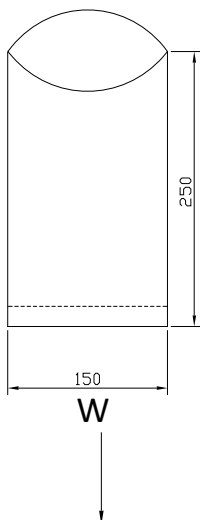
# CASING/包装

## 17. CASING/包装

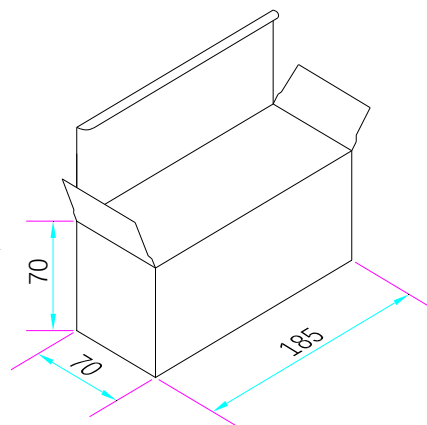
Product



PE film bags



WHITE BOX



# 外箱尺寸重新设计包装

## The outer box size has been redesigned for packaging

MECHANICAL DIMENSION (UNIT IN cm) / 尺寸 (单位 cm):

	L	W	H
PLASTIC BAG/塑料袋	250	150	
WHITE BOX/小白盒	185	70	70
PAPER CASE/外箱			

PACKING METHOD/包装方式:

CARDBOARD PLACEMENT METHOD/纸板放置方式	
PACKING METHOD / 装箱方式	
QTY/装箱总数	
N. G/单个成品净重	
G. W/毛重	

REMARK/备注:

1. STORAGE CONDITION/保存条件

TEMPERATURE/保存温度:  $-10^{\circ}\text{C} \sim +60^{\circ}\text{C}$

RELATIVE HUMIDITY/相对湿度: 30% ~ 80%

2. STORAGE TIME/保存时间: 6 MONTHES/6个月

3. ANLISTATIG: NO REQUIREMENT/无防静电要求.

4. PLEASE ADVISE IF ANY COMMENT ON PACKING INFORMATION, OTHERWISE, THIS INFORMATION IS REGARDED AS CUSTOMER APPROVAL AND APPLY IN PRODUCTION.

包装资料供客户样品认可使用, 如有疑问, 请于样品认可前提出, 否则, 资料将视为客户认可并应用于生产上.